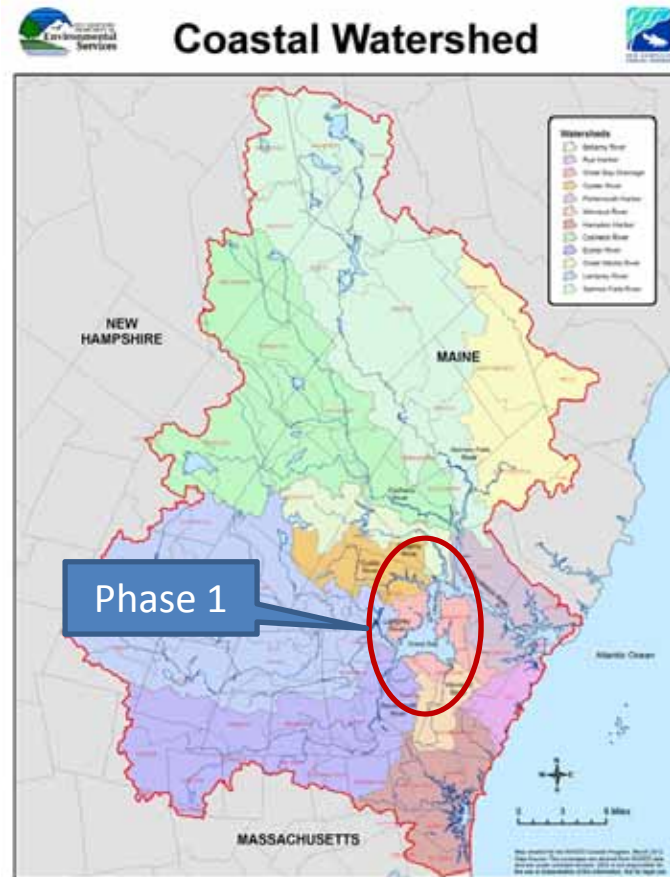


Great Bay

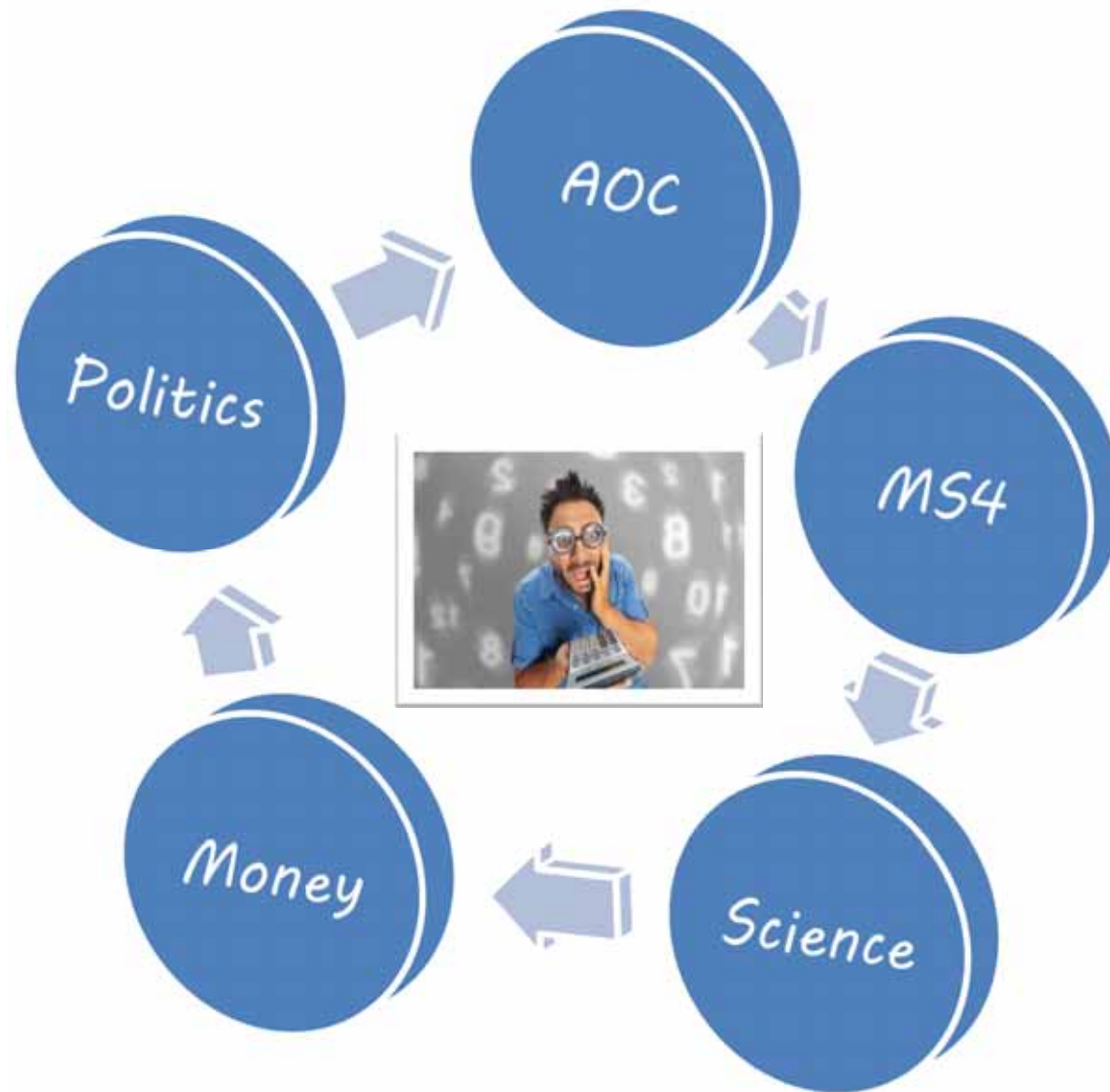


2016 NH Water & Watershed Conference
Managing New Hampshire's Water for a More Resilient
Environment – March 18, 2016
Jamie Houle, UNH Stormwater Center
Sally Soule, NH Department of Environmental Services

What is PTAPP? Who is Involved?



Why PTAPP & Why Now?



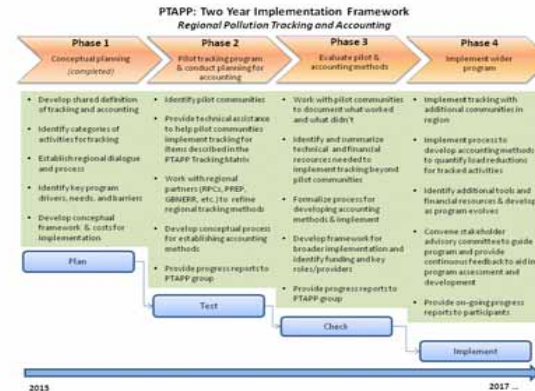
Process and Outcomes

Productive Meetings!



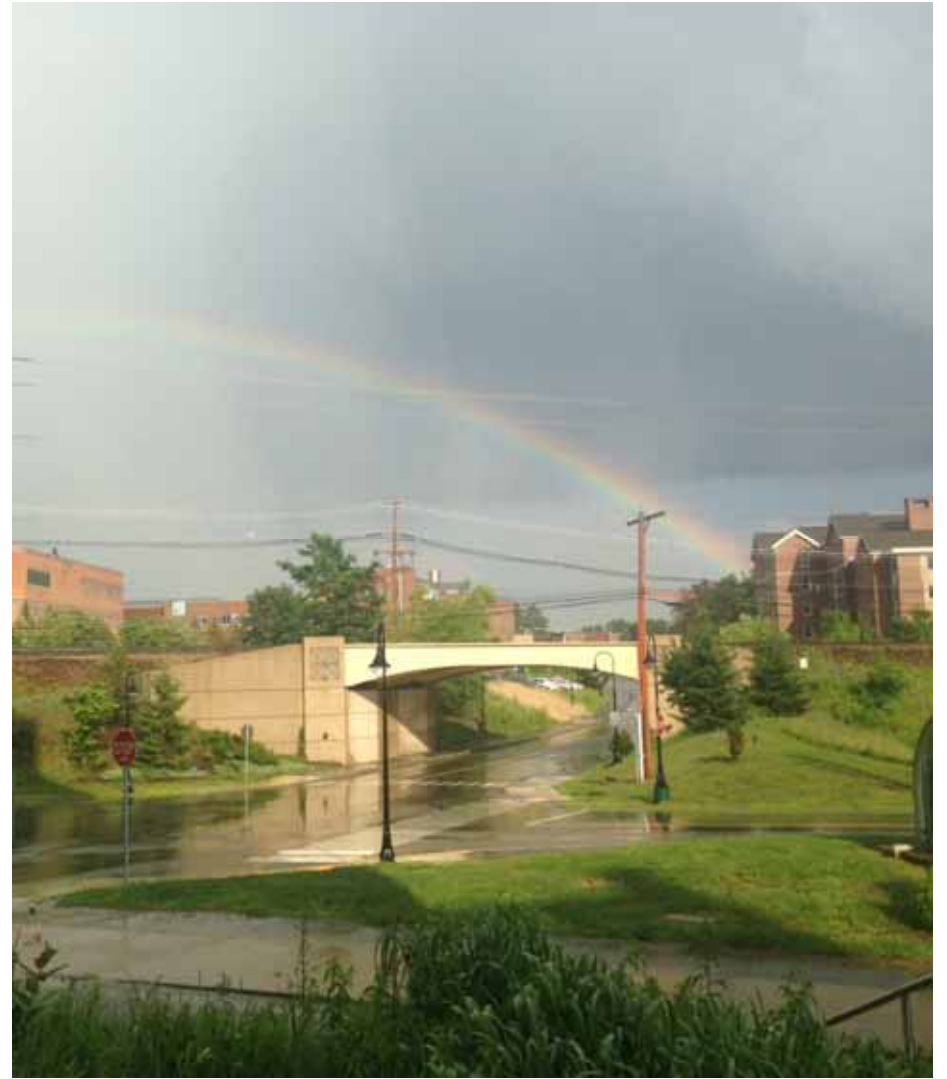
ACCOUNTING—A quantitative method for inventorying and tabulating planning, management, and conservation practices that affect hydrology and water quality

TRACKING—Information about activities that may contribute to increases or decreases in pollutant loading

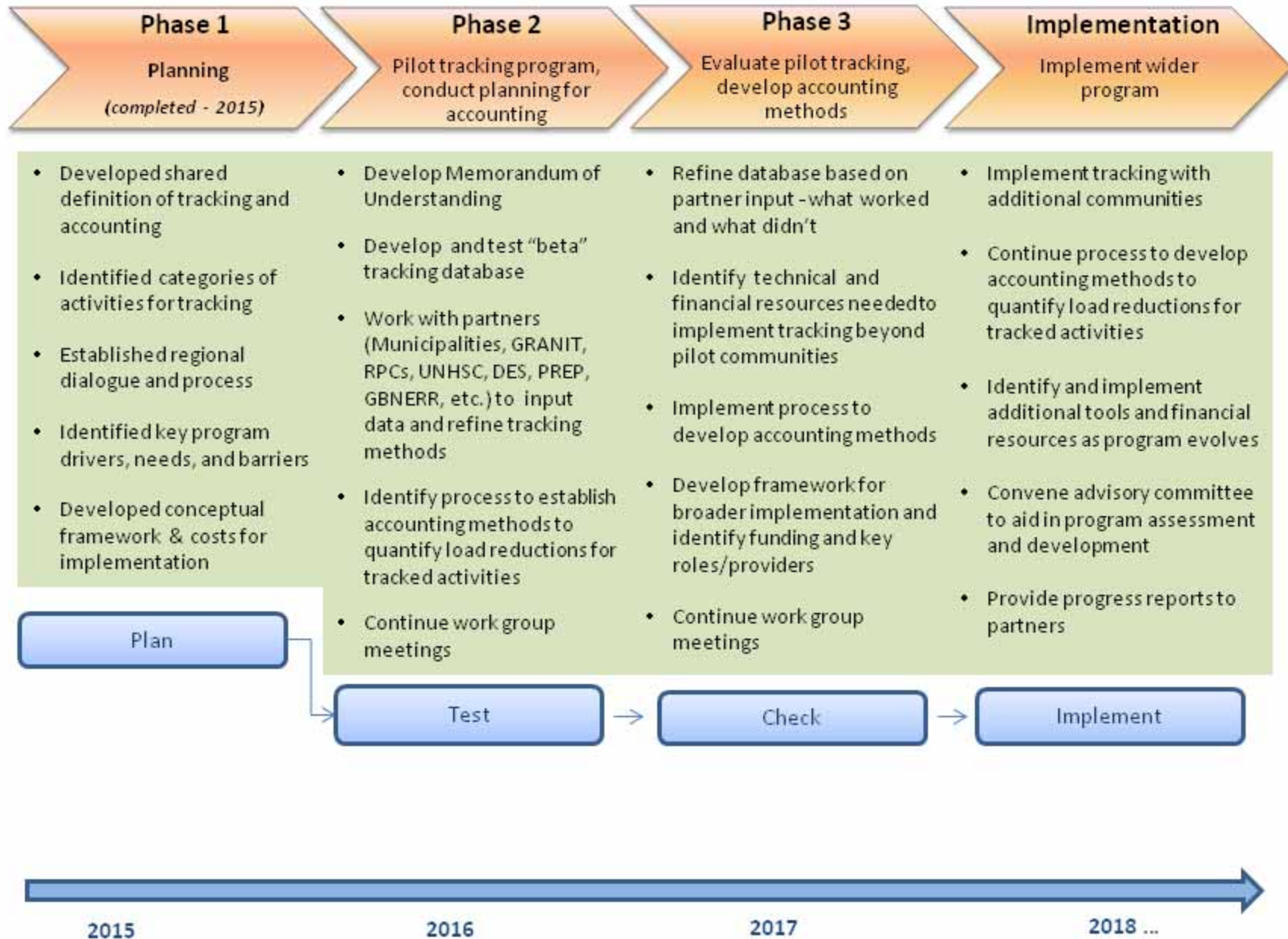


Next Steps

- There are numerous accounting and tracking efforts underway in the east
- Chesapeake
- VT DEM
- LIS
- PTAPP
- Charles River
- Lake Champlain



PTAPP: Implementation Framework *Regional Pollution Tracking and Accounting*

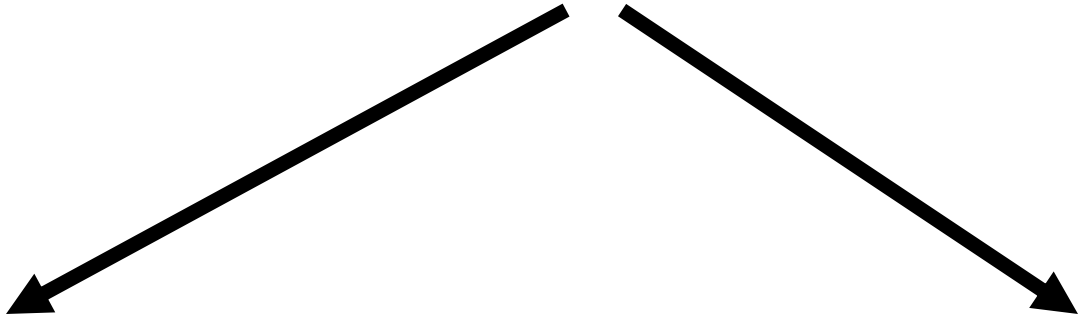


Next Steps

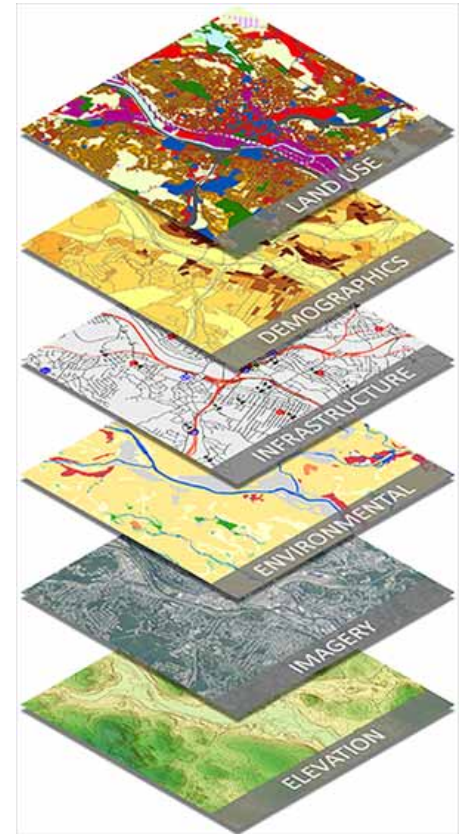
- There are numerous accounting and tracking efforts underway in the east
- Chesapeake
- VT DEM
- LIS
- PTAPP
- Charles River
- Lake Champlain



Tracking Item	Impact & Implementation priority	Tracking Item Definition	Potential for Regional Data Collection (Yes/No)	Recommended Regional Tracking Method/Entity (If Yes, what is the regional method - Describe HOW the item could be tracked)	Recommended Local Tracking Method (If No, what is the local method - Describe HOW the item could be tracked)	Who is responsible for providing data	What is the frequency of data collection	Suggested units for tracking
Changes to the amount of EIC and disconnected IC						--- this item included in the row below ---		
New IC, IC removed, IC routed to pervious area	HighPhase 1	IC = land covered by constructed materials, such as pavement and buildings	Yes	GRANITRPCs - track changes in IC with land cover data every five years	Tier 1. local; Tier 2. regional	Tier 1. Municipalities; Tier 2. GRANITRPCs	Tier 1. annually; Tier 2. 5 years	acres



Local online tracking



Regional Tracking

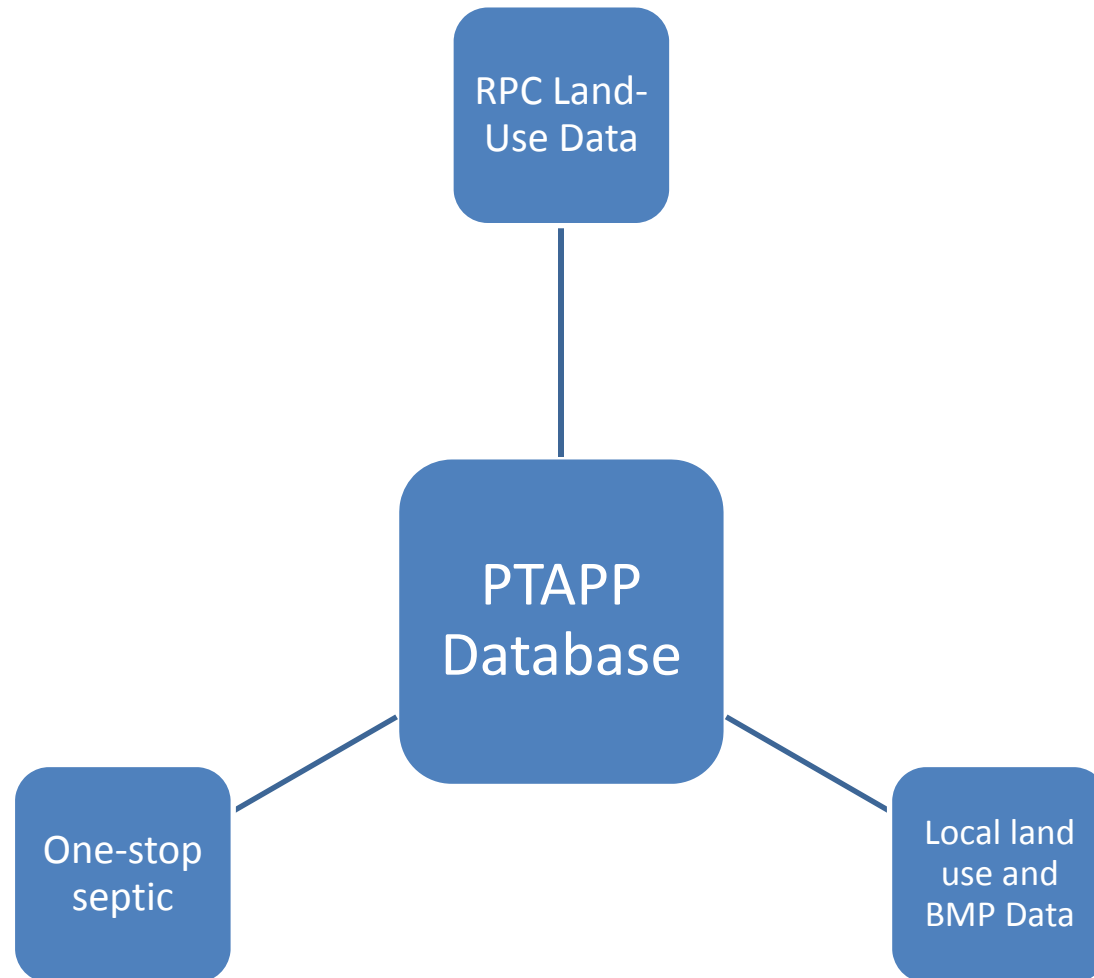
Local Tracking and Regional Database Development

- Setting up development, preview, and production environments
- Designing site layout
- Designing and implementing PTAPP database
- Developing community data entry form
- Establishing user types/permissions/user registration
- Developing reporting templates
- Site hosting (for a period of 2 years)

Regional Tracking

- Land use and land use change acreages
- Impervious surface acreage
- Conservation land acreage
- Coordinating with NH DES to acquire annual updates to relevant one-stop database

General Database Architecture



Questions???

